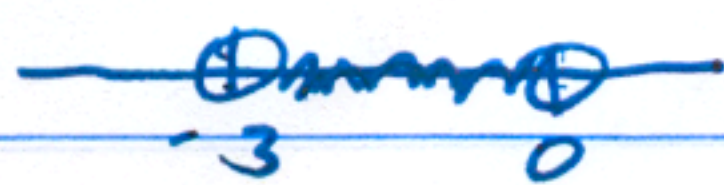


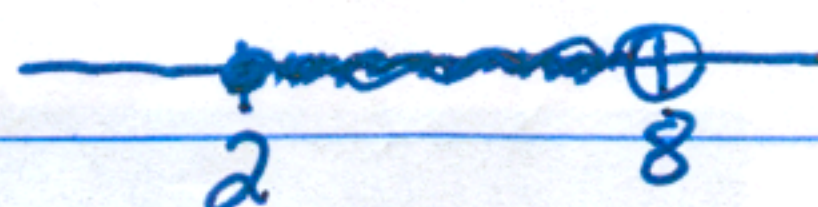
Ch. 2.1, 2.2, 2.4 & ch. 1 Assessment (2).

These are the answers to the non bold part of review.

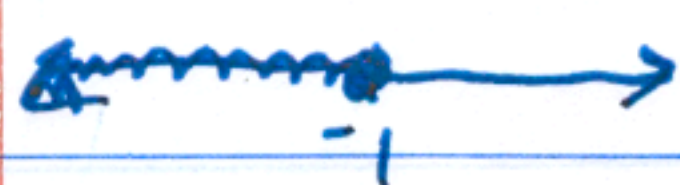
1. $-3 < x < 0$



2. $2 \leq x < 8$



3. $(-\infty, -1]$



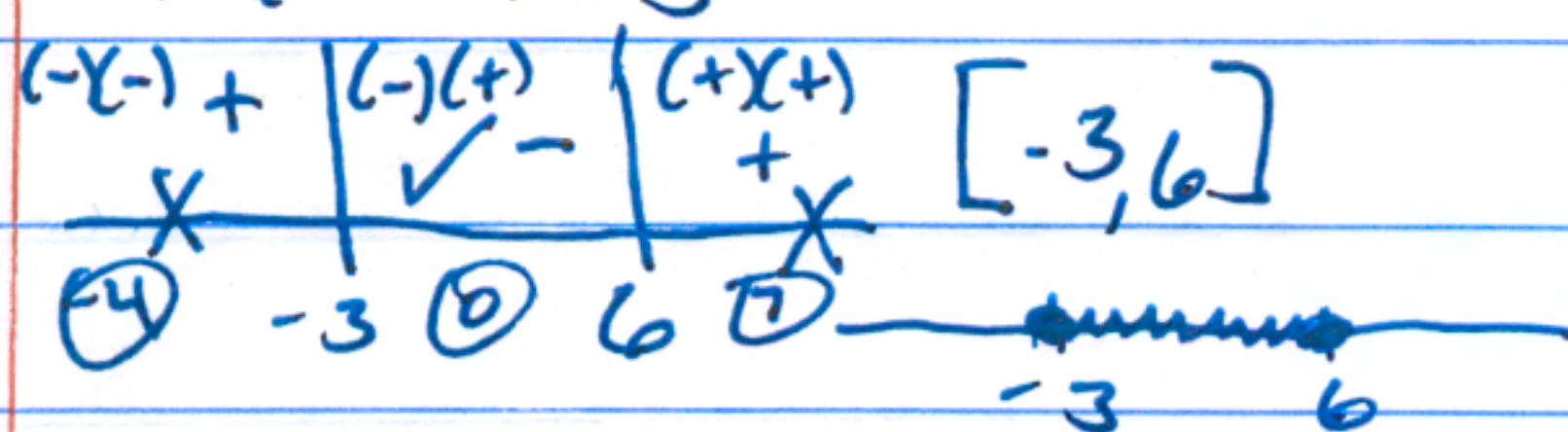
4. $[1, 2]$



5. $x^2 - 3x - 18 \leq 0$

$(x-6)(x+3) \leq 0$

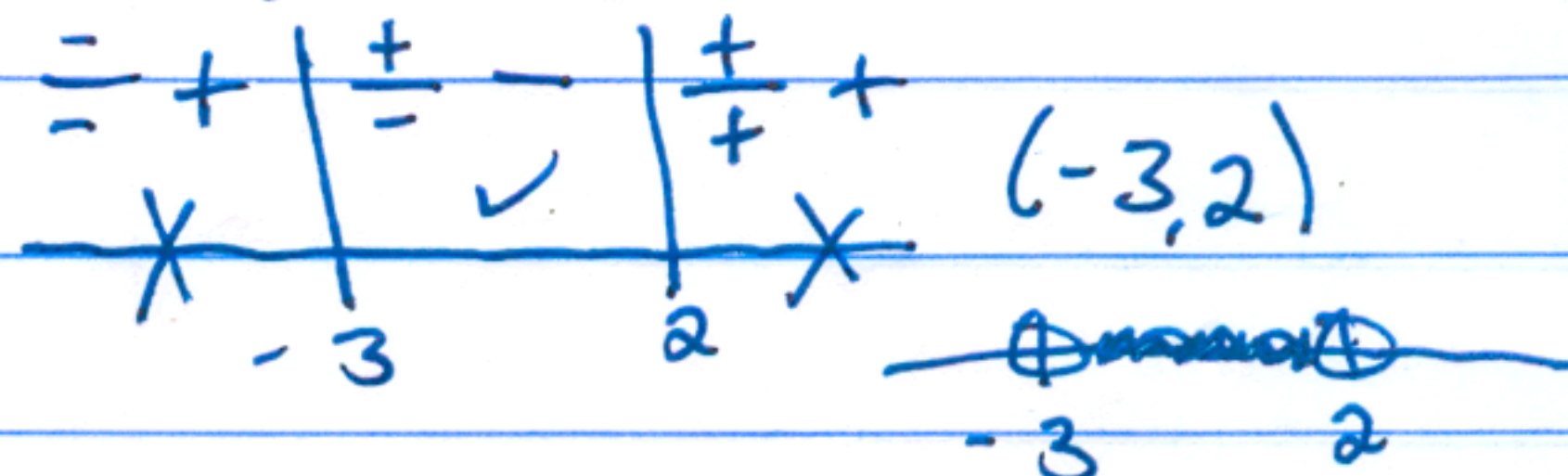
$x=6 \quad x=-3$



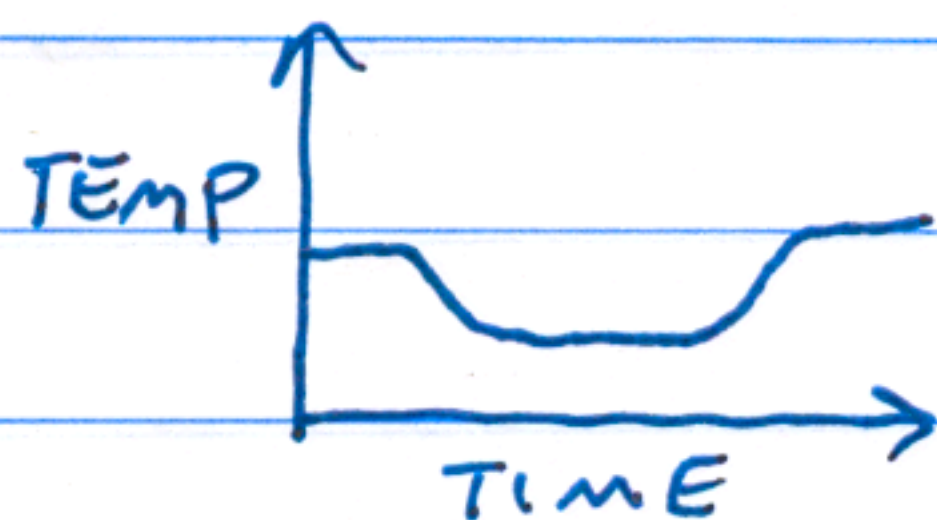
6. $\frac{2x+6}{x-2} < 0$

$2x+6=0 \quad x-2=0$

$x=-3 \quad x=2$



7.



8. $x-3 \neq 0$

$x \neq 3$

9. $x-5 \geq 0$

$x \geq 5$

10.

$2+x \geq 0 \quad 3-x \neq 0$
 $x \geq -2 \quad x \neq 3$

11. All real numbers.

12.

$f(a) = 3a - 2$

$f(a+h) = 3(a+h) - 2$
 $= 3a + 3h - 2$

$\frac{f(a+h) - f(a)}{h} = \frac{3a + 3h - 2 - [3a - 2]}{h}$

$= \frac{3a + 3h - 2 - 3a + 2}{h} = \frac{3h}{h} = 3$